



Rock T21

**Smontagomme automatico
per autovetture, trasporto
leggero, motoveicoli e scooter**

**Automatic tyre changer for
cars, lightweight transport
vehicles and motor vehicles**

**Automatische
Reifenmontiermaschine für
PKWs, Kleintransporter,
Motorräder und Motorroller**

21"



*HTB21

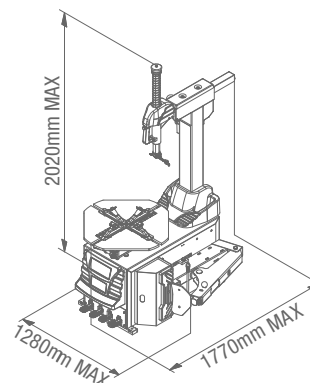
*HTB21 helper a richiesta - helper optional - Helper auf Anfrage

code 8-11900261

ORLANDINI



ACCESSORI IN DOTAZIONE
STANDARD ACCESSORIES - STANDARDZUBEHÖR

DIMENSIONI DI INGOMBRO
OVERALL DIMENSIONS - GESAMTABMESSUNGEN

ACCESSORI RACCOMANDATI
RECOMMENDED ACCESSORIES - EMPFOHLENES ZUBEHÖR

Cod. CT-S-0200000

Pinza premitallone in plastica

Plastic bead pressing clamp

PVC wulsthalteklemme


Cod. CT-S-0110000

Attrezzo per cambio rapido testina di smontaggio

Demount head quick change tool

Schnellverschluss Demontagekopf


Cod. CT-S-0310000

Gruppo testina di smontaggio in plastica (per modelli con braccio a ribaltamento)

Plastic demount head assy (for tilt back model use)

Kunststoff Demontagekopf Baugruppe (für Modelle mit kippbarer Montagesäule)


Cod. CT-21-8000100

Testina di smontaggio motocicletta

Motorcycle demount head

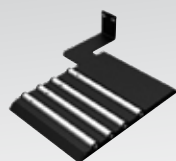
Motorrad-Montagekopf


Cod. C-M-0200000A

Adattatore motocicletta (stile rullo manuale), per uso con sistema a griffe STANDARD

Motorcycle adaptor (hand roller style), for STANDARD jaw system use

Motorrad Anpasser (Handrolle) für STANDARD Klauensystem Verwendung


Cod. CT-S-0600000

Supporto rotazione ruota WRSB

Wheel rotation support WRSB

Raddrehhalter WRSB


Cod. 8-11900271

Kit protezioni in plastica leva e paletta

Lever and shoe plastic protection kit

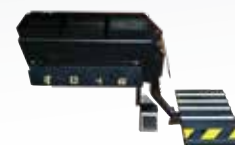
Kit Schutzelemente aus Kunststoff für Hebel und Schaufel

Cod. 8-11900270

Kit protezioni in plastica

Plastic protection kit

Kit Schutzelemente aus Kunststoff


Cod. 8-11120075

Sollevatore ruota FWL 65

Wheel lifter FWL 65

Radheber für Räder FWL 65

DATI TECNICI
TECHNICAL DATA - TECHNISCHE DATEN

Presca esterna	Outside Clamp	Spannbereich außen	10" - 21"
Presca interna	Inside Clamp	Spannbereich innen	12" - 24"
Diametro max. ruota	Max. wheel diameter	Maximaler Raddurchmesser	960 mm
Larghezza pneumatico	Tire Width	Reifenbreite	3" - 12"
Apertura stallonatore	Bead-breaker opening	Abdruckvorrichtung Öffnung	320 mm
Potenza stallonatura	Bead-breaking power	Abdruckkraft	15000 N
Pressione di esercizio aria	Working air Pressure	Arbeitsluftdruck	8 - 10 bar
Potenza motore	Motor Power	Motorleistung	1.1 kW
Velocità rotazione mandrino	Chuck rotation speed	Spannfutter Rotationsgeschwindigkeit	6,5 rpm
Rumorosità durante il funzionamento	Noise level running	Laufender Geräuschpegel	<70 dB
Peso netto macchina	Nett Weight machine	Nettogewicht Maschine	179 kg
Peso lordo macchina	Gross Weight machine	Bruttogewicht Maschine	207 kg
Dimensione max imballo (LxPxH)	Max Dimension Imballage (LxPxH)	Max. Abmessungen Verpackung (LxBxH)	980x760x950 mm
per contenitore da 40"	for 40" container	Für 40" Behälter	56 pcs